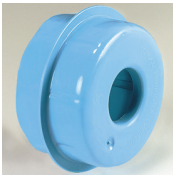


Sonoco Plastic Plug Specifications



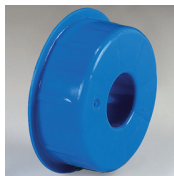
SP-290 double



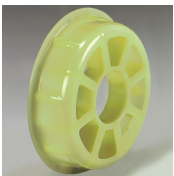
SP-295 single



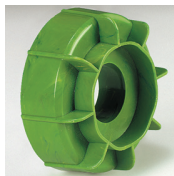
SP-298 single



SP-301 single



SP-302 single



SP-303 single



SP-305 single



SP-330 single



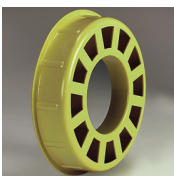
SP-601 single



SP-603 single



SP-611 single



SP-613 single

Delivering superior quality and service in a simple way

Keep it simple. That's what Sonoco had in mind for customers with our injection-molded plastic plugs.

Designed to complement our broad range of fiber, plastic and composite cores used for winding film, paper, textiles, foil, tape and specialty products, Sonoco's plastic plugs provide the superior quality customers have come to expect from our products. And, since you can rely on Sonoco for both cores and plugs—along with responsive service and support—you can eliminate the hassle of dealing with multiple suppliers.

The end result is a customer-friendly packaging solution that meets your needs and provides simplicity in purchasing and inventory management.

- Suspension pad plugs for various IDs
- Center bore ranging from 1.05" to 3"
- Core plugs for 3" and 6" IDs
- Light to heavy duty loads
- Single or double plug design
- Made from both recycled and virgin plastic
- With and without flanges
- Under or oversized plugs available for a loose or snug fit

Product code	OD body	OD across lugs	OD flange	Height	ID bore	Weight lbs/each
SP-290 double	2.940"	N/A	3.400"	1.670"	1.070"	0.040
SP-295 single	2.945"	2.990"	3.450"	1.030"	1.120"	0.036
SP-298 single	2.990"	N/A	N/A	1.250"	1.080"	0.073
SP-301 single	3.020"	3.065"	3.450"	1.148"	1.130"	0.044
SP-302 single	3.000"	3.085"	3.395"	0.855"	1.080"	0.031
SP-303 single	3.070"	3.075"	3.250"	1.185"	1.080"	0.073
SP-305 single	3.045"	N/A	3.870"	1.420"	N/A	0.049
SP-330 single	3.010"	3.065"	N/A	1.380"	1.020"	0.135
SP-601 single	6.010"	N/A	6.540"	1.295"	1.025"	0.179
SP-603 single	6.010"	N/A	6.540"	1.320"	3.000"	0.181
SP-611 single	6.010"	6.055"	6.500"	1.300"	1.035"	0.190
SP-613 single	6.030"	6.055"	6.530"	1.310"	3.000"	0.161

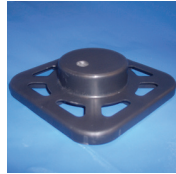
Sonoco Plastic Plug Specifications



12" pad plug



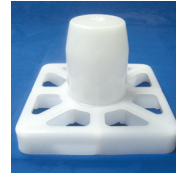
14" pad plug



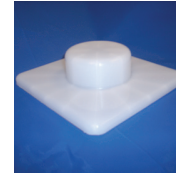
3¹⁵/₁₆" pad plug



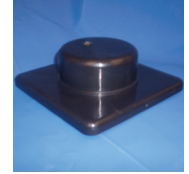
3¹⁵/₁₆" pad plug w/step



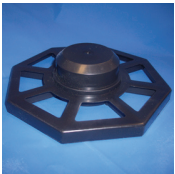
4¹/₂" x 2" pad plug



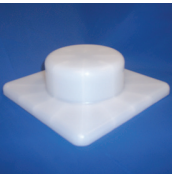
4⁷/₈" pad plug



4⁷/₈" pad plug w/step



5¹/₂" octagonal pad plug w/step



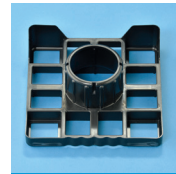
5⁷/₈" pad plug



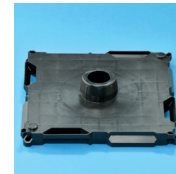
6³/₈" x 2" pad plug



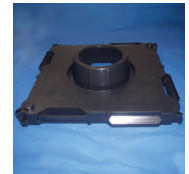
6³/₈" x 3" pad plug



6³/₄" x 3" pad plug



12"x 3" end plate



12"x 5" end plate

Product description	Hub OD	OD across lugs	Flange dimension	Height	ID bore	Weight lbs/each
12" pad plug	2.900"	3.025"	12.000" sq.	2.270"	1.500"	0.419
14" pad plug	2.920"	3.010"	13.800" sq.	2.400"	1.500"	0.551
3 ¹⁵ / ₁₆ " pad plug	2.000"	N/A	3.940" sq.	0.400"	N/A	0.044
3 ¹⁵ / ₁₆ " pad plug w/step	1.250"	N/A	3.940" sq.	0.630"	N/A	0.050
4 ¹ / ₂ " x 2" pad plug	1.945"	N/A	4.562" sq.	2.312"	N/A	0.094
4 ⁷ / ₈ " pad plug	2.970"	N/A	4.875" sq.	1.590"	N/A	0.094
4 ⁷ / ₈ " pad plug w/step	2.970"	N/A	4.875" sq.	1.590"	N/A	0.094
5 ¹ / ₂ " octagonal pad plug w/step	2.200"	N/A	5.500" sq.	0.650"	N/A	0.069
5 ⁷ / ₈ " pad plug	2.970"	N/A	5.875" sq.	1.590"	N/A	0.125
6 ³ / ₈ " x 2" pad plug	1.945"	N/A	6.375" sq.	2.312"	N/A	0.121
6 ³ / ₈ " x 3" pad plug	2.961"	N/A	6.500" sq.	2.300"	N/A	0.137
6 ³ / ₄ " x 3" pad plug	N/A	3.000"	6.750" sq.	2.500"	2.450"	0.198
12"x 3" end plate	N/A	3.020"	12.000" sq.	2.500"	1.840"	0.952
12"x 5" end plate	N/A	5.150"	12.000" sq.	2.625"	3.750"	0.869

Contact Us:

1 North Second Street, Hartsville, SC 29550 US
864/968-3160 | sonoco.com

